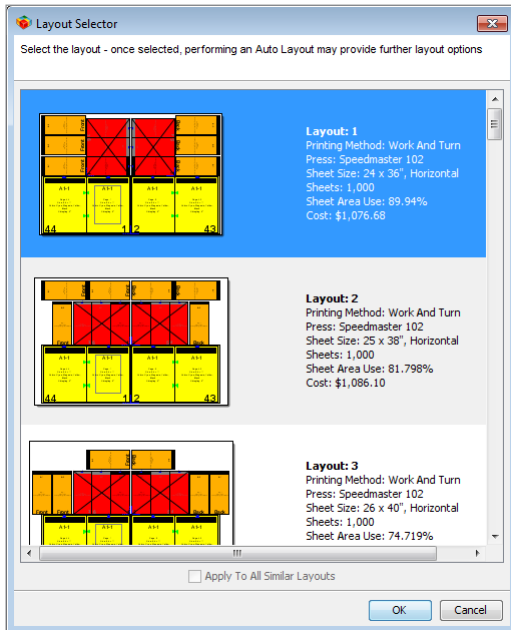


What's New in **metrix** 2010.0

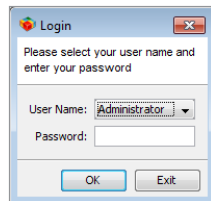
New Features

- **Auto Production** – this amazing and unique Metrix feature automatically determines the most cost-effective Printing Method, Press, & Sheet Size! This is a tremendous new asset – and – Auto Production is in EVERY Metrix edition.

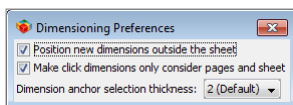


- **User Permissions, Logins, & Passwords** – Metrix 2010.0 has full, flexible security. Administrators can now assign a specific User Role to each Metrix User – from allowing everything for the Administrator, to read-only privileges for a Guest. Roles can be person- or responsibility-specific, with separate names and passwords for each user. Now, when you start Metrix you will be asked for a user name and password. Here are the defaults:

LOGIN	PASSWORD
Administrator	a
Guest	guest
Senior	senior
Junior	junior



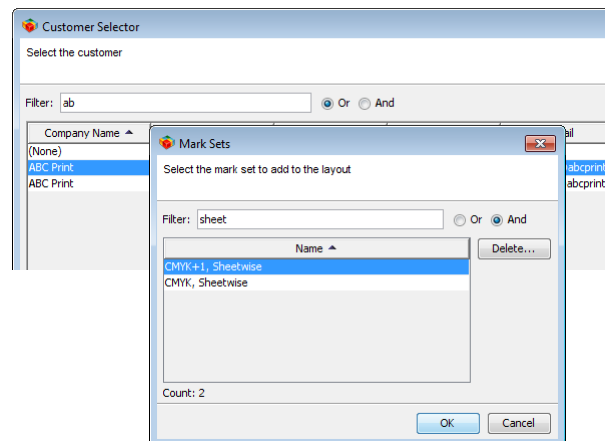
- **Click Dimensions** – semi-automated insertion of dimensions. Now you can just click the mouse to create a horizontal dimension in any page or gutter, and Shift+click to create a vertical dimension.



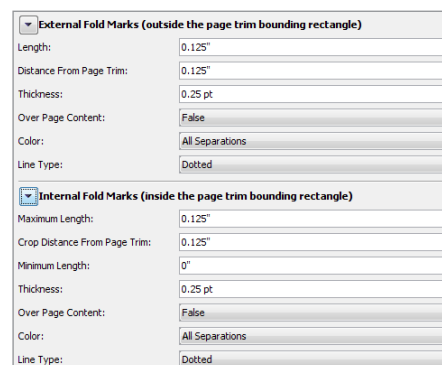
- **Duplicating File Marks** – automatic duplication or cropping of file marks to a specified area or across the width or height of the layout.

Property	Value
ID	Mark 1 (File: colorbar.pdf)
File	colorbar.pdf
Sizing	File Height, Variable Width
Center Image	False
Width	36"
Height	0.25"
File Width	3.6666666666666665"
File Height	0.25"
Mark Anchor Point	
Layout Anchor Object	Press Sheet
Layout Anchor Point	

- **Filtering/Sorting Stocks, Customers, and Mark Sets** – another feature that will boost productivity and make Metrix ever friendlier to operate.



- **Centralized Marks Folder** – the Marks folder can now be centralized for multi-user installations. Each Metrix client's User Preferences must point to the central Marks folder.
- **Missing PDF File Marks** – Metrix will now generate an error, preventing Export with missing marks.
- **Enhanced Folding Marks** – Complete user control over signature folding marks, placed from the Export dialog.

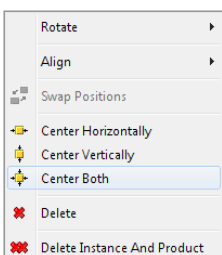


What's New in **metrix** 2010.0

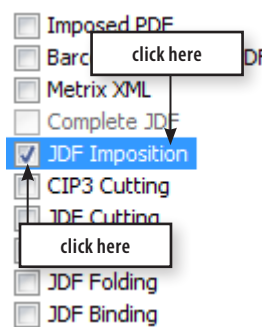
- **Trim Mark Weight** – You can now specify the thickness of the trim marks on the Export dialog.
- **Collation Marks Color** – You can now specify the color for the collation marks.
- **Barcode Marks Color** – You can now specify the color for barcodes, both for the ones added via the Marks > Add Barcode menu, and those added during the Barcoded Imposed PDF export. During the schema update that occurs when Metrix 2010.0 is first run, any existing barcode marks in the database will be set to be colored 100% K (Black).

Property	Value
Mark Anchor Point	<input type="checkbox"/> <input type="checkbox"/> <input type="checkbox"/> <input type="checkbox"/> <input type="checkbox"/> <input type="checkbox"/> <input checked="" type="checkbox"/> <input type="checkbox"/> <input type="checkbox"/>
Layout Anchor Object	Press Sheet
Layout Anchor Point	<input type="checkbox"/> <input type="checkbox"/> <input type="checkbox"/> <input type="checkbox"/> <input type="checkbox"/> <input type="checkbox"/> <input checked="" type="checkbox"/> <input type="checkbox"/> <input type="checkbox"/>
Horizontal Offset	0"
Vertical Offset	0"
Placement	Both Front and Back
Mirror Backup	True
Over Page Content	True
Color	Black
Output	Both Export and Report

- **Multiple Lines of Text in Barcodes** – Enabled barcode human readable text to wrap to multiple lines. The variable to force a new line is <!>. This feature is part of both the layout barcode marks and the Barcoded Imposed PDF export.
- **New Text Variable** – Added <Layout.Stock> as a variable for a Text Mark's **Text** property field, or in a Barcode Mark's **Barcode Text** or **Human Readable Text** fields.
- **Zooming and Panning** – Enabled zooming and panning using keystrokes and the mouse. See the new and upgraded Metrix User Guide, p. 32 for all the details.
- **New Keyboard Shortcuts** – The keyboard shortcut for Save As is now Ctrl+Shift+S (Windows) or Cmd+Shift+S (MacOS). The keyboard shortcut for Apply Standard is now Ctrl+Shift+A (Windows) or Cmd+Shift+A (MacOS).
- **New Centering Option** – Center selected product instances both Horizontally and Vertically.



- **Fold Panel Width** – The Fold Panel Width can now be adjusted to a minimum of 0.25" (6.35mm).
- **Maximum Character Count** – You can now import or input up to 2010 characters in the following properties:
 - Project Name, Description, and Notes
 - Product Name, Description, and Notes
- **Enhanced Export dialog** – Now you can click on the checkbox to enable/disable output (only) or click on the Export Type Name to review the settings (only) – you will no longer disable the output in order to check your settings.



- **New Export Dialog buttons** – Now there is a new **Save Settings** button. The Export dialog buttons now have this functionality:
 - Cancel** – closes the dialog without remembering anything except which expandable sections were expanded or collapsed.
 - OK** – validates all settings, saves all settings to the properties files, exports everything selected to export if all is OK, and closes the dialog.
 - Save Settings** – validates all settings except destination folders (in case they're not current) and the selected layout sides (because they're never saved as settings), and saves all settings to the properties files. Does not export anything or close the dialog.
- **Xenith Sierra** – Xenith Sierra is now available as an option on the list of prepress workflows.
- **Rampage JDF** – Added extra output to Rampage JDF to allow them to link every ORD to a product.
- **New and Improved User Guide** – Instructional movies have been added to the Metrix User Guide to make understanding Metrix even easier. The movies supplement the completely updated written instructions.

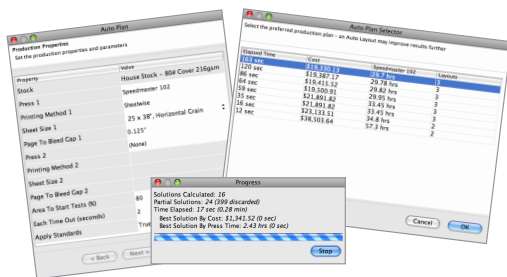
What's New in **metrix** 2010.0

New Architecture

Metrix 2010.0 has a new architecture that allows you to add modules to your Metrix Commercial license – add only the modules that you need. Metrix Max sites automatically receive all four modules. The optional modules cannot be added to Metrix X-8 or X-80

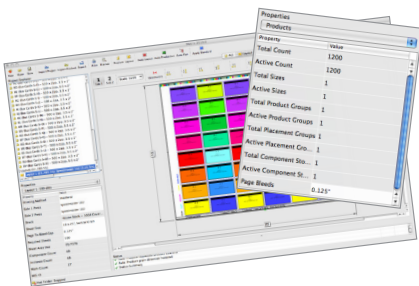
Auto Plan module

- Automatically and dynamically determines how many layouts are required for the products in the project.
- Plans and simultaneously imposes across multiple press sheets and even multiple presses.
- Uses real costing data from the Metrix database.
- Applies standards where appropriate.
- Uses proprietary and sophisticated algorithms to consider dozens, hundreds, or even thousands of options to find the optimum project solution.



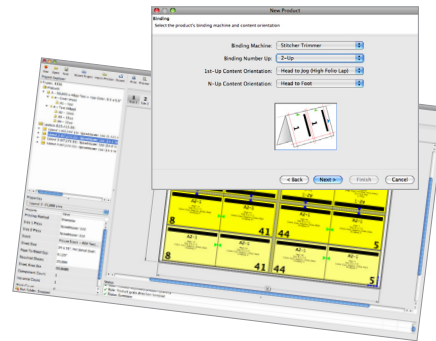
Capacity Plus module

- Allows for projects of greater complexity – more products for Auto Layout and Auto Production calculations, and more products per project.
- Up to 2000 products allowed per project, regardless of the number of press sheets.
- Up to 160 products allowed for Auto Production and Auto Layout calculations.



N-Up Binding module

- The N-Up module automates the setup of products that print, fold, and bind 2- or 3-up on a press sheet.
- Customers who need this functionality normally own finishing equipment that can accommodate 2- or 3-up binding, such as a book saw or specialized knife-trimmer.
- This module provides instant visual feedback on how the project will fit on a press sheet with the new manufacturing configuration.
- The Metrix N-Up Binding module is incredibly easy to work with – even editing the options is easy.
- Metrix takes care of all the details like shinging/creep compensation automatically.



Barcodes module

- Provides the barcode identification of products, book components, layouts, etc.
- Barcoded Imposed PDF – used to create an overlay sheet for gang/combo runs for quality assurance and to speed fulfillment and invoicing.
- Barcode Marks – used for automated finishing systems, and to speed fulfillment and invoicing.

