

SCREEN



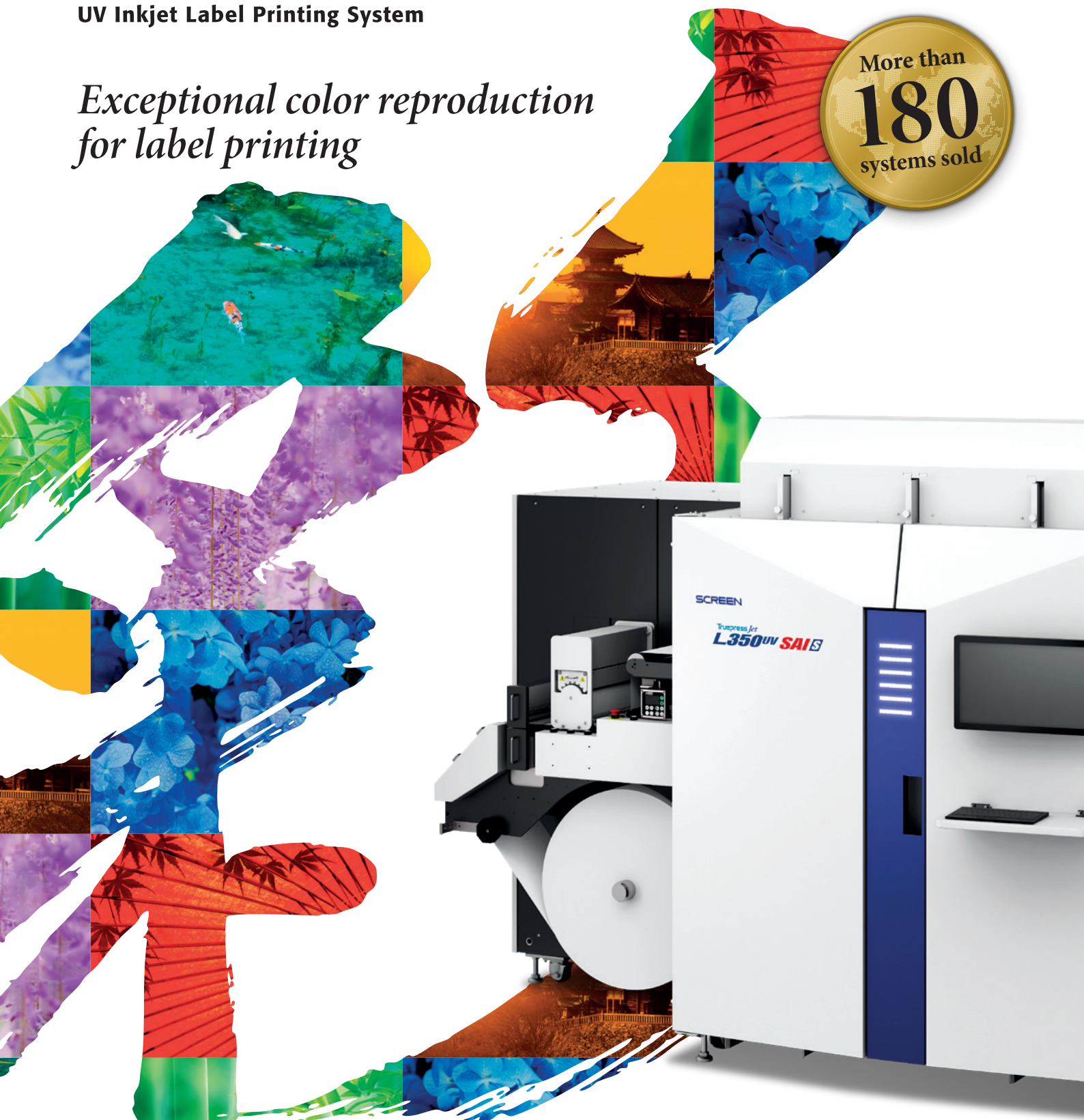
CREATING A FUTURE  
IN PRINT

Truepress Jet  
**L350<sup>uv</sup> SAI** Series

UV Inkjet Label Printing System

*Exceptional color reproduction  
for label printing*

More than  
**180**  
systems sold



# Exceptional color reproduction for Label printing

## Truepress Jet L350UV SAI

**Print size:** Up to 322 mm (12.6") wide  
**Media width:** 100 to 350 mm (4" to 13.7")  
**Media thickness:** 0.04 to 0.35 mm (1.6 to 13.7 mil)  
**Roll diameter:** 750 mm (29.5")  
**Resolution:** 600 × 600 dpi



## Features

### HIGH PRODUCTIVITY AND QUALITY

High productivity label printing system, including high speed 60m/min version, supports wide range of application with high quality.

*The LM model is still productive.*

### STABILITY

Outstanding stability enables same print quality in repeat job regardless of operator skill level.

*Results are affected by factors such as lot and output conditions.  
Assessments are based on in-house tests.*

### EASY OPERATION

Easy touch panel operation simplifies high quality printing and automated maintenance such as head cleaning.

### BROAD APPLICATION

Truepress ink for L350UV series have been developed for a wide range of applications and compliance with many global ink regulations.

## Three models specially designed to meet any requirements

	E model Entry model	S model Standard model	LM model Food packaging label model
<b>Ink configuration</b>			
Normal	CMYK	CMYKW	
Additional	White, Orange	Orange, Blue	Orange
<b>Productivity</b>			
Full color	60 m/min <sup>*1</sup>	60 m/min	60 m/min
+ White	30 m/min	50 m/min <sup>*2</sup>	30 m/min

<sup>\*1</sup> Standard: 50 m/min; Option: 60 m/min.

<sup>\*2</sup> Standard: 30 m/min; Option: 50 m/min.

## Ink lineup

### Standard Ink LV

Truepress ink for L350UV LV

All purpose inks with a wide color gamut and outstanding media compatibility expands business opportunities.  
*Only supported for the Truepress Jet L350UV SAI S model.*

### Standard Ink LS

Truepress ink for L350UV LS

All purpose inks specially designed to deliver improved cost performance while maintaining the same quality.  
*Only supported for the Truepress Jet L350UV SAI E model.*

### Low migration ink

Truepress ink for L350UV+LM

Specially developed for food packaging applications and only for LM model. These inks minimize the migration of components compared to standard inks.

## Compliance with main ink regulations

- European Printing Ink Association (EuPIA) Guidelines
- EuPIA Exclusion List for Printing Inks and Related Products
- EuPIA Good Manufacturing Practice (GMP) Printing Inks for Food Contact Materials
- Positive list on Swiss Ordinance (SR 817.023.021 Annex 6, 10)\*
- Nestle Guidance (August 2016)\*
- VOC: Directive 1999/13/EC.
- Latex: We do not introduce intentionally during the manufacturing of the ink above natural latex.
- REACH (SVHC): The 191 substances which had been listed in the SVHC candidate lists up to REACH 19th are not present in amounts of 0.1% or more.
- RoHS: Commission delegated Directive (EU) 2015/863 of 31 March 2015

*\* Only for the Truepress ink for L350UV+LM*



## HIGH QUALITY

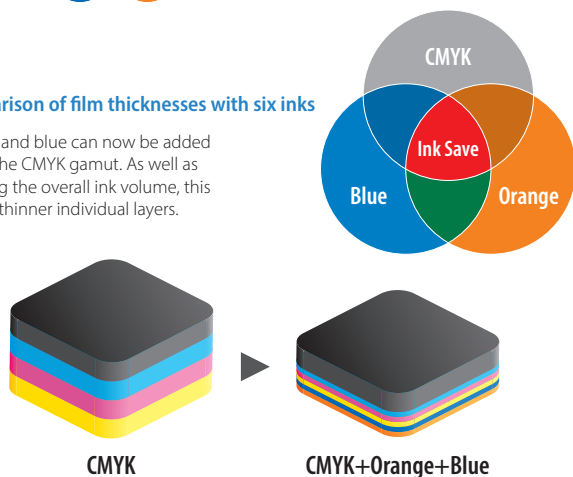
### Expanded Color Gamut (ECG) inks ensure superior color reproduction while an extra printhead provides optimum scalability

Orange and Blue Inks provide Expanded Color Gamut capabilities. Reproduce spot colors with ECG capabilities without increased ink usage.



#### Comparison of film thicknesses with six inks

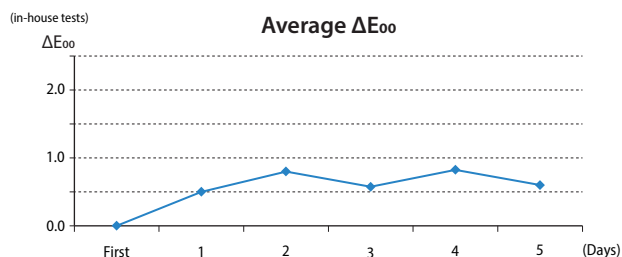
Orange and blue can now be added within the CMYK gamut. As well as reducing the overall ink volume, this creates thinner individual layers.



### Greater output stability ensures reliable reproduction even for repeat jobs

The color variation stays within  $\Delta E_{00}$  not just from the start to end of a current job but even for repeat jobs printed several days later.

#### Color variation from start to end of job



### Outstanding color reproduction even for repeat jobs



### Exceptional registration accuracy and micro-droplets support security printing

Even minute text can be printed with great precision. This provides superior readability on medical, supplement and other labels with large amounts of small type information. The use of micro-droplets also supports all major types of security printing, including QR and barcodes plus dot codes and security tint patterns.



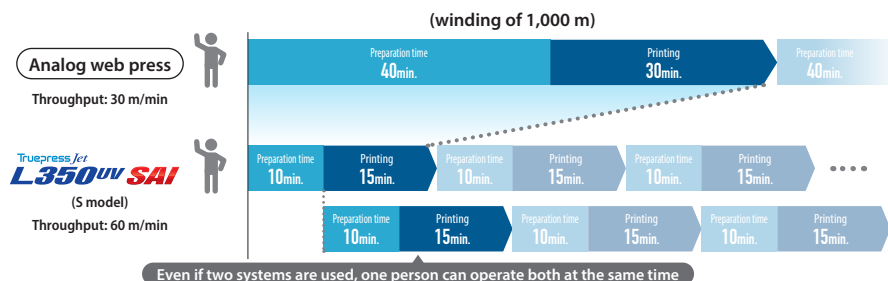
## HIGH PRODUCTIVITY

### Major increases in productivity enable efficient handling of mixed, medium lot and fast turnaround work

With SAI-S model, print speeds have been boosted to 60 meters per minute, while the time required for preparation work has been dramatically shortened compared to an analog press. A single SAI system can now deliver the same level of productivity as three analog web presses.

Results are affected by factors such as lot and output conditions. Assessments are based on in-house tests.

#### Throughput of Truepress Jet L350UV SAI series vs. analog web presses (in-house tests)



## EASY OPERATION

### Central touch panel operation streamlines processing and boosts efficiency

All steps required for printing can now be performed directly from a system's touch panel. Even daily head cleaning can be activated by pressing a single button. An operator can learn how to handle the press within one week thanks to the highly intuitive GUI.

This GUI also greatly simplifies processes such as color, spot color and media matching, even for inexperienced operators. A single operator can easily handle all stages from color matching after roll replacement right through to printing even when multiple systems are used together.

The user-friendliness of the GUI also eliminates the problems usually experienced when training new staff. This truly is a major step forward in ease of use for operators.

### Highly intuitive GUI simplifies operation

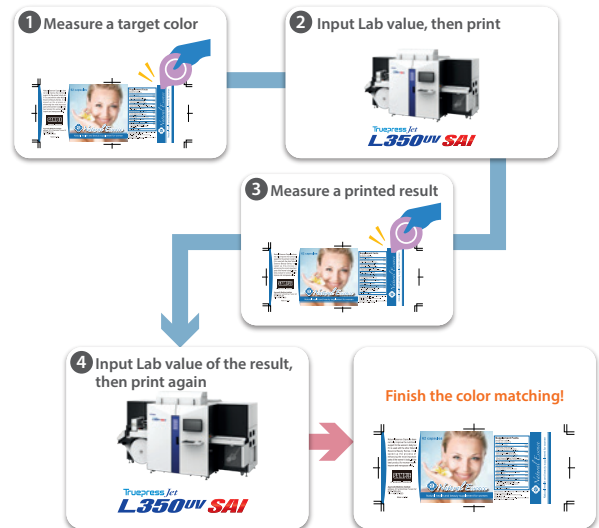


Main operation screen



Head cleaning screen

### Simplified color matching



## Meet Truepress Jet L350UV Series Customers

*"Our solution offers a very attractive option when compared to other digital solutions."*



Further  
information  
»»»



### Hine Labels Ltd.

Yorkshire, UK

### Truepress Jet L350UV+LM used for food safe shortrun pouch application

Hine Labels, based in Yorkshire in the UK produces labels, tags and tickets. This company is expanding its application offering by manufacturing flexible printed pouches with its UV inkjet label presses.

**"Currently running two SCREEN Truepress systems, one of which is Low Migration, SCREEN has enabled us to develop our business we can run labels, tags or pouches all in one shift if need be, due to the ease of use and ability to switch from different web types at will. Reliability gives us confidence to schedule high workloads through the SCREEN presses. I look forwards to working with SCREEN in the future."**



## Options

### Corona unit

Performing corona discharge onto the media before printing improves the surface and increases ink adhesion.

### Web cleaner

With its combination of a cleaning roller and adhesion roller, the web cleaner effectively removes dust including paper particles and powder. This device ensures low maintenance and stable, uninterrupted operation.

### Splice detection sensors

The splices in joined media (splice media) are detected with dedicated sensors. Following detection, the printheads move up and down while the processing speed is maintained. This makes it possible to continue output without stopping the equipment.

### Reverse feed

Automatic reverse feed function enables to minimize substrate wastes. Operators can reverse substrate with simple setting in advance.

### Mark sensors

The mark sensors read light sensitive marks that have been printed in advance, allowing them to be used as references for performing high-precision overprinting.

### Chill roller

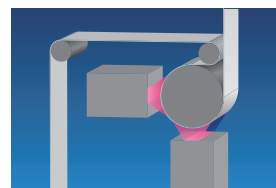
Adoption of the refrigerated chill roller has increased stability when outputting thin film media. This improved handling of thin films opens up a range of new opportunities for package printing.

\* Not available for the E model. Installed as a standard feature in other models.

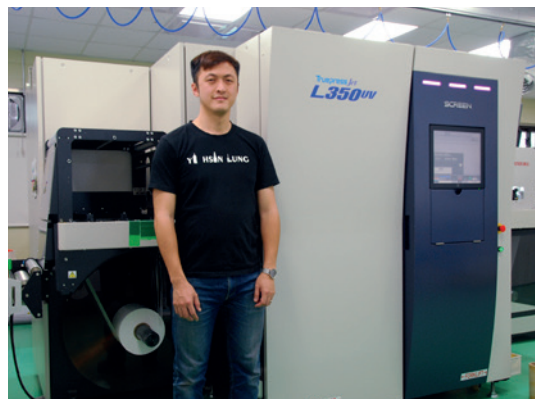
### Double UV lamps

SAI systems are fitted with two newly developed high-power UV lamps,\* significantly increasing ink adhesion.

\* Not available for E model.



*“Following its installation, our customers are often amazed we can produce such high quality labels with a digital press.”*



YI HSIN LUNG CO., LTD.

**SCREEN Truepress Jet L350UV has solved almost all of the problems they had before introduction**

Taiwanese adhesive production company, YI HSIN LUNG CO., LTD, had issues particularly with the quality, color and durability. The Truepress Jet L350UV has solved almost all of the problems the company had before introduction. It allows them to produce consistent color and quality whenever they use it.

**“Previously, even rush jobs took us up to three days to complete. Now, if we receive the instructions in the morning, we can complete everything by the same afternoon. And operation is definitely simpler than the press we were using. Once you set the substrate, size and other data on the monitor, printing starts automatically. I think even someone without printing experiences could probably operate this press.”**

Further  
information  
▶▶▶

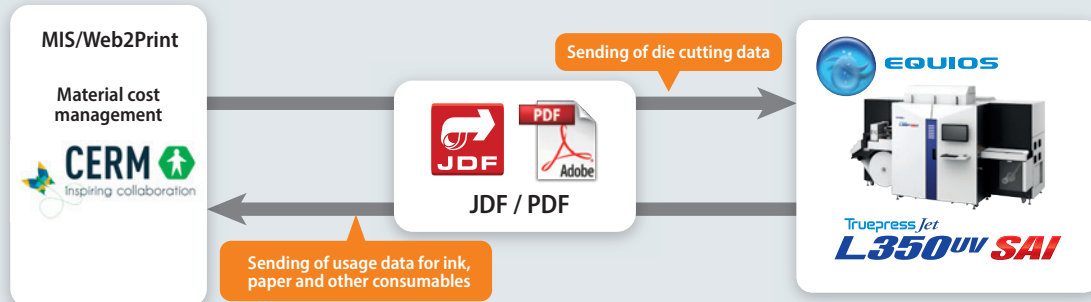


A wide range of labels can easily be created to meet the requirements of individual client workflows

## BROAD APPLICATIONS

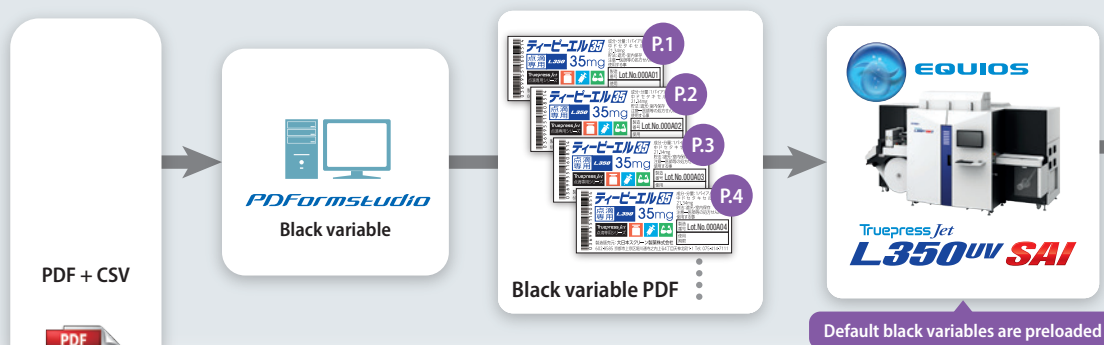
### More efficient production and management

EQUIOS is able to read print data, including die cutting specifications, from an MIS or other process management system. This helps to both streamline operations and reduce costs for printing presses.



### Black variable

Extra value can easily be added to jobs thanks to features such as serial number-based traceability or QR codes for promotional campaigns.



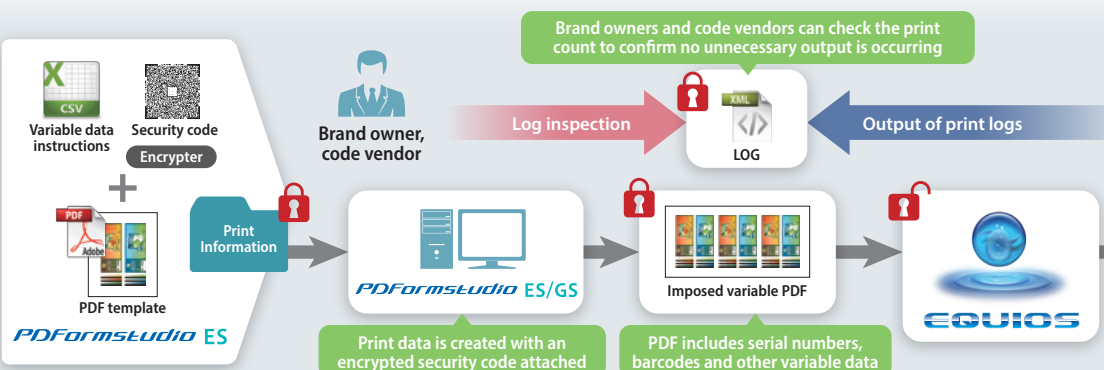
### Color variable

Color variable functions enable the production of labels with greater visual impact. The ability to output multi-page PDFs also gives greater freedom in content creation.



### Authentication and traceability

Valuable digital data can be reliably protected. Items such as security codes help to prevent pirating or reselling of data while clients can be notified of print counts and other details. These features effectively build trust with brand owners.





## Network support

Real-time maintenance minimizes down time

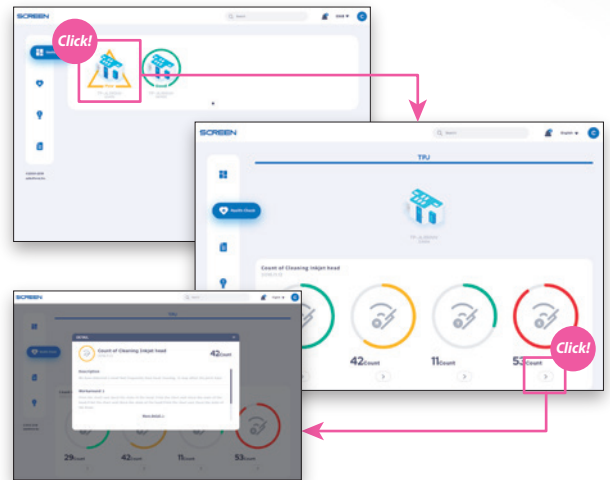
## TRUST Network Service

TRUST Network Service is a proprietary support program provided by SCREEN to prevent unexpected problems. This program offers a full menu of services including predictive diagnosis based on monitoring equipment conditions, as well as regular analytical and maintenance reports. If trouble does occur, TRUST is able to identify the area of malfunction and alert the operator as well as log the instance for reporting purposes.

### Health check and advisor

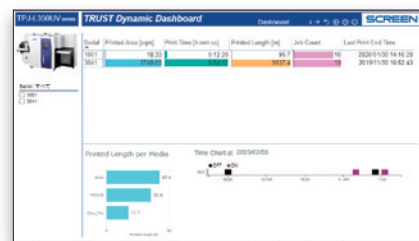
In this dashboard, operator can easily check machine's status. The analysis screen tracks the usage of consumable and other items. It also issues alerts when necessary, allowing potential problems to be eliminated.

This system automatically suggests precise solutions to the alerts so it is able to resolve potential problems by yourself.



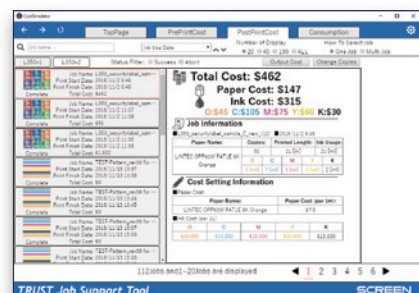
### Dynamic dashboard

The dashboard allows cloud-based monitoring of the operating status of L350UV systems. Parameters such as print time, ink consumption and job progress can all be checked at a glance, helping to ensure systems are running at peak efficiency.



### Job support tools

Usage statistics for ink, paper and other items make it possible to accurately calculate the cost of individual jobs. Job logs and consumption data can all be checked locally by users as required.



Contact your local SCREEN representative for detailed information on TRUST Network Service.

A range of die cutting and printing data can be embedded for each roll

### LeadIn LeadOut



Example: variable printing of production numbers

One pass output of labels



Products can be authenticated by reading their codes



Truepress Jet L350UV SAI

## Truepress Jet L350UV SAI Series Specification

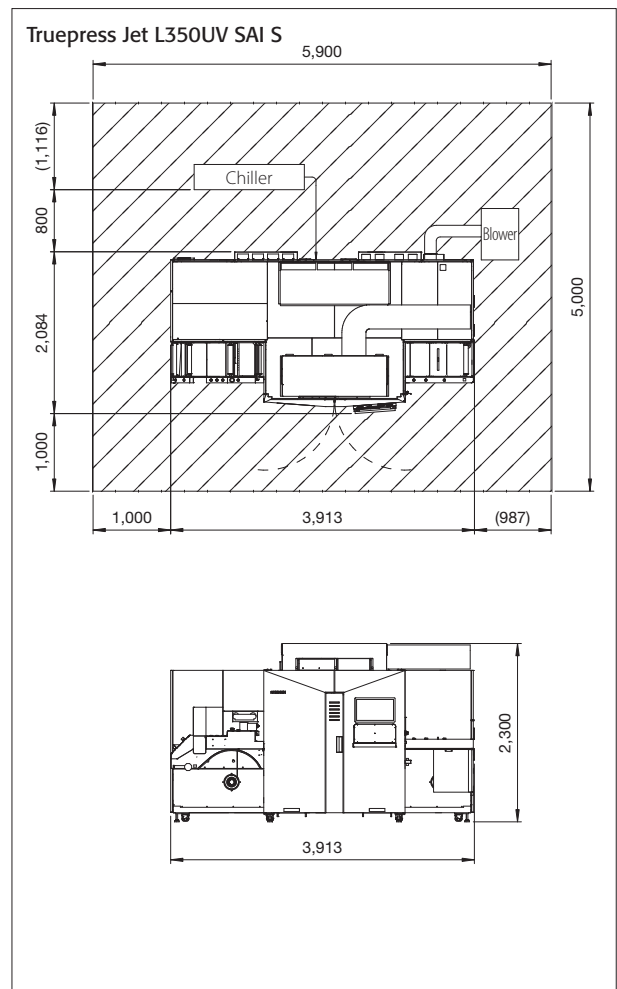
Product name	Truepress Jet L350UV SAI E	Truepress Jet L350UV SAI S
Printing system	Piezo single-pass printing	
Resolution	600 × 600 dpi	
Printing speed	16.1 m <sup>2</sup> (173.3 ft <sup>2</sup> ) / min at 50 m (164 ft) / min 60 m (196.8 ft) / min is option.	19.3 m <sup>2</sup> (207.8 ft <sup>2</sup> ) / min at 60 m (196.8 ft) / min
Printing size	Width: Maximum 322 mm (12.6") Repeat length: 50.8 mm to 2,438.4 mm (2" to 96")	
Media size	Width: 100 mm to 350 mm (4" to 13.7") Roll diameter: Maximum 750 mm (29.5") Weight: Maximum 120 kg (264 lb)	
Media thickness	0.09 to 0.35 mm (3.5 to 13.7 mil)	0.04 to 0.35 mm (1.6 to 13.7 mil)
Inks	Truepress inks for L350UV LS Ink tank capacity: 8 liters per color Ink bottle capacity: 4 liters per color	Truepress inks for L350UV LV Ink tank capacity: 8 liters per color Ink bottle capacity: 4 liters per color
Output configuration	CMYK (standard specification) CMYK + White CMYK + Orange CMYK + White + Orange <i>White and Orange inks can be added on-site.*1</i>	CMYK + White (standard specification) CMYK + White + Orange CMYK + White + Blue CMYK + White + Orange + Blue <i>Orange and Blue inks can be added on-site.*1</i>
Printheads	4 step grayscale printheads Droplet size: Minimum 3 picoliter	
Printer controller & RIP	EQUIOS for L350	
Main options	Web cleaner, Mark sensors, Corona unit, Splice detection sensors, Full color variable data processing*1, Reverse feed, MIS connection(CERM)*2	Web cleaner, Mark sensors, Corona unit, Splice detection sensors, Chiller, Dual UV lamps, Full color variable data processing*1, Reverse feed, MIS connection(CERM)*2
Dimension (W × D × H) / Weight	Printer: 3,913 × 2,084 × 2,300 mm (154.1" × 82" × 90.6") / 2,860 kg (6,305 lb)	
Power requirements	Printer: Three phase, 380/400/415 V, 4 W, 50/60 Hz, 50 A*3 PC: Single phase, 100/240 V, 50/60 Hz, 600 W <i>Earth leakage circuit breaker (200 mA sensed current) must be installed on the printer.</i>	
Operating environment	Required temperature relative humidity: 15 to 25°C (59 to 77°F) / 40 to 70% [no condensation] Warranted temperature and relative humidity: 18 to 24°C (64.4 to 75.2°F) / 40 to 70% [no condensation] Recommended elevation: less than 1,000 meters above sea level	
Incidental utilities	Air-pressure utilities such as compressor Connection to exhaust duct	

\*1. These options are under development.

\*2. This option is not available in all regions.

\*3. A boost transformer is required when installing in 200V area.

## Space requirements (mm)



Truepress Jet  
**L350UV SAI Series**

Access to product information



## SCREEN Graphic Solutions Co., Ltd.

### HEAD OFFICE

• Tenjinkita-machi 1-1, Teranouchi-agaru 4-chome, Horikawa-dori, Kamigyo-ku, Kyoto 602-8585, Japan / Tel: +81-75-414-7610

### SCREEN GP Americas, LLC

• 150 Innovation Drive - Ste A, Elk Grove Village, IL 60007, U.S.A. / Tel: +1-847-870-7400 / Fax: +1-847-870-0149 www.screenamericas.com

### SCREEN GP Europe B.V.

• Bouwerij 46, 1185XX Amstelveen, The Netherlands / Tel: +31-20-456-78-00 www.screeneurope.com

U.K. office / Tel: +44-1582-72-5400

### SCREEN Holdings Singapore PTE. Ltd.

• 29, Kaki Bukit View, #02-00, Kaki Bukit Techpark II, Singapore 415963 / Tel: +65-6845-3288 / Fax: +65-6741-2168 www.screenasp.com.sg

### SCREEN GP China Co., Ltd.

• Room 2001 - 2003, 20/F Cable TV Tower 9 Hoi Shing Road Tsuen Wan, N.T. Hong Kong / Tel: +852-2953-0038 / Fax: +852-2755-8683 www.screenchina.com

Shanghai office / Tel: +86-21-3126-5122 / Fax: +86-21-5218-2199

Beijing office / Tel: +86-10-6708-9271 / Fax: +86-10-6708-9395

Guangzhou office / Tel: +86-20-3887-9650 / Fax: +86-20-3887-9653

### SCREEN GP Taiwan Co., Ltd.

• 4th Floor, No. 126-1, Min-tsu West Road, Taipei, Taiwan R.O.C. / Tel: +886-2-2586-2711 / Fax: +886-2-2591-4367

### SCREEN HD Korea Co., Ltd.

• K-TOWER 11F, 88, Iljik-ro, Manan-gu, Anyang-si, Gyeonggi-do, 13901, Korea / Tel: +82-2-727-0860 / Fax: +82-2-727-0876 www.screen-korea.com

### SCREEN GP Australia PTY., Ltd.

• Suite 16A, 2 Eden Park Drive, Macquarie Park, NSW 2113, Australia / Tel: +61-2-9016-3400 / Fax: +61-2-9016-3425 www.screenaustralia.com.au

Internet web site : [www.screen.co.jp/ga](http://www.screen.co.jp/ga)

[www.screenamericas.com](http://www.screenamericas.com)

[www.screeneurope.com](http://www.screeneurope.com)

The QR code on the right can be used to check whether this brochure is the latest version.



We reserve the right to alter product design and specifications without prior notice.

No.205-189E V4-E SCI 06-21

Printed by the Truepress Jet520HD+ / SC inks