

Prepress Workflow

:Arkitex Pair

On-time, Intelligent Page Pairing.

Agfa designed :Arkitex Pair to accommodate a busy production environment and to eliminate unnecessary wait time. It lets you pair pages as they arrive. It knows when pages will arrive and goes to work the minute they do. It's all part of the intelligent :Arkitex workflow management.

Intelligent Imposition

:Arkitex Pair and :Arkitex Imposer perform "native" 2-, 4- and 8-up impositions so that all user interfaces display the status of each layer, page and plate. It easily handles editions that include sections and variations. In addition to pairing pages as they arrive, :Arkitex Pair saves time and money by preventing unnecessary film/plate imaging. For example, when all pages of a job arrive, :Arkitex Pair can be configured to expect a late black layer and therefore will not image the plate or film for the black layer until a second version is received.

Visual Plate Design Tool

Design your own plate layout with the visual design tool. It lets you visually define the size of the final film or plate, the size and position of the pages on the plate, and add plate furniture.

Publication Builder

The Publication Builder feature makes planning even the most complex publication easy. It includes a visual page-sharing interface for easy sharing among editions and zones. It lets you define multiple-level hierarchies to include multiple editions/zones in a single plan file, define page variations and configure page sharing across multiple editions/zones in a single publication.

Page- and Sheet-Based Approval

:Arkitex Pair lets you put both a sheet and/or page on hold while authorised users view a softproof for final approval before imaging. It lets them view the page or sheet image from either the Tracking or the SoftProof display. It then logs the approval in the database.

Page and Sheet SoftProofs

Minimise output errors by softproofing both pages and sheets. You can view on screen an ICC colour managed proof of the pages using the same data that will be used for high-resolution output to plate. The softproofing feature allows you to send a proof to advertising and editorial so those who know what the pages are supposed to look like can provide approval.

:Arkitex Pair

Local-Language Configuration

You can configure :Arkitex Pair to use another language in the users Client interface, the server operating system, and for file naming.

Imposition Adjustments

:Arkitex Pair simplifies planning of complex imposed editions by making imposition adjustments for half-web positions automatically.

Double Burning

The Double Burn feature eliminates RIPping errors at deadline. Double burning is the combining of two bitmap layers, typically one ad stack and one editorial bitmap, into a single layer for imaging. :Arkitex Pair Double Burns and checks overlap and highlights changes in the page layout.

Flexible Format Options

True-data format flexibility lets you choose the data format based on preferences and to accommodate job requirements. :Arkitex Pair provides native support for a variety of formats, including TIFF and PDF. Choosing TIFF enables softproofing of the actual TIFF data to be imaged, while compact PDF streamlines the workflow. You can choose different data formats for the same edition. :Arkitex Pair also lets you choose RIPping options—RIP once and output as many times as needed to decrease network traffic, or RIP each time a plate copy is required to allow additional information/tracking tags.

Intuitive User Interface

A flexible user interface lets you view multiple levels in the publication tree. It also allows you to configure the publication tree to display production exactly as desired. It lets you filter pages/sheets based on various status levels. It allows different users to focus on specific data simplifying their job and highlighting priority files

MAXML™ System Integration

Agfa developed MAXML to provide faster production and tighter system integration. It interprets and implements planning instruction. Based on the XML standard, MAXML describes the structure of an edition and the work required to produce it. It also describes the structure of a message passed from one system to another with information defining the work required, thereby providing seamless integration.



Hardcopy Proofing of Pages and Sheets

:Arkitex Pair lets you output hardcopy proofs of pages and sheets. High-resolution TIFF files provide a visual proof of how the final pages and sheets will print on press.

Secure Server Options

:Arkitex Pair provides two backup security options in the event the main server fails. As each file is processed Active Backup automatically copies them to a backup server. It also copies the production database at timed intervals. If the primary server should fail, Active Backup will restore databases and ready the backup server for production. High Availability provides additional protection. It shares data storage with the primary server to provide an automatic fail-safe system.

Ensure Output Quality

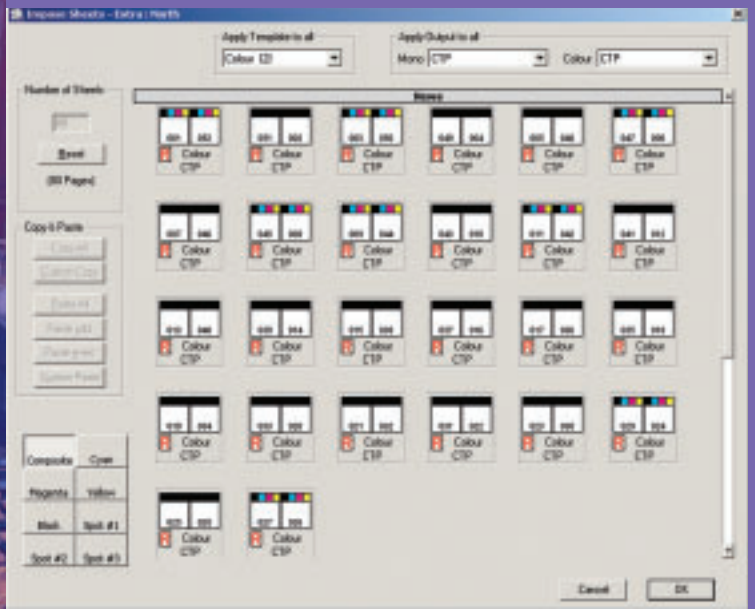
The system ensures output quality before processing. A native preview of PDF pages and sheets allows late RIPping of plates for added calibration.

Purging Options

:Arkitex Pair lets you purge tracking information, data files, and system messages manually or automatically. You can create rules that execute at defined times and purge based on publication date or the time an edition has been in the system.

User Permissions

You'll get complete control over access and permissions through full user permission log-in :Arkitex Pair lets you create users and groups using the standard Windows management tools. Then the :Arkitex configuration program lets you assign permissions to each user or group, to all or selected publications or editions.

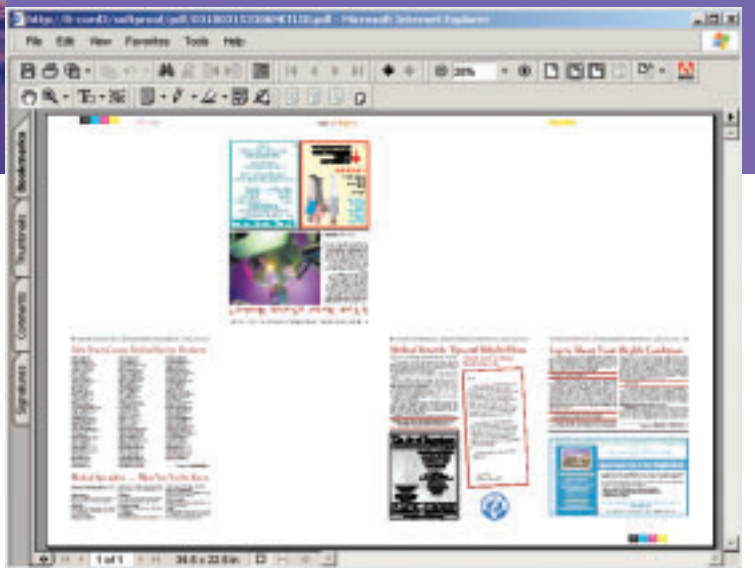


Flexible File Name Recognition

:Arkitex Pair's flexible file name recognition allows easy integration to pagination systems. The system combines long and short names and lets you define files with all variables.

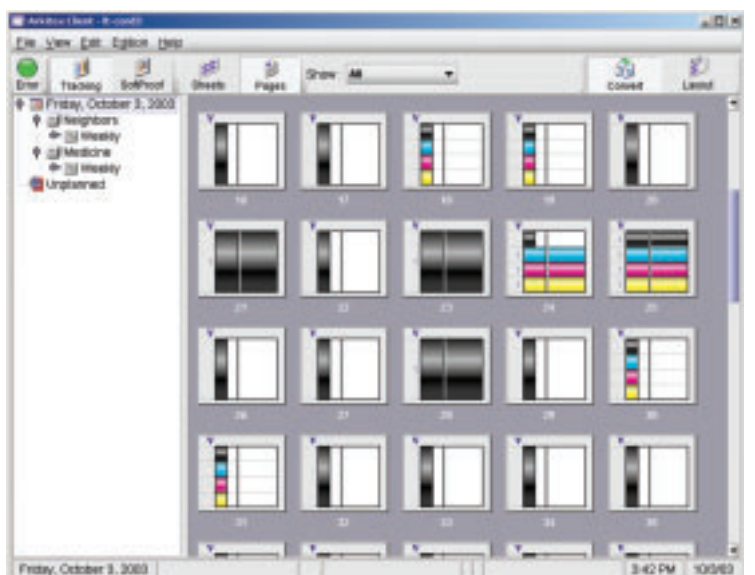
Web-Browser Convenience

The system let's authorised users manage and track production from the plate room, the press room or anywhere using a standard Web browser.



Page- and Plate-Status Tracking

:Arkitex Pair tracks the arrival of pages, the imposition of pages and the imaging status of plates. Plate tracking lets you view the status of the plates as they image.



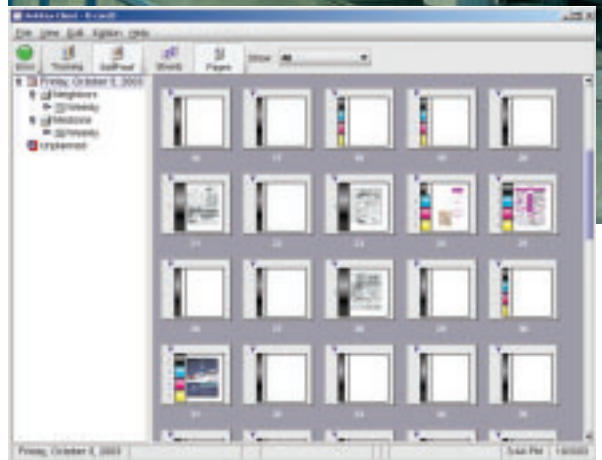
:Arkitex Pair

Extending Workflow Management

Because :Arkitex is modular, you can extend the functionality of any component as your needs change, simply by adding another.

Each :Arkitex module integrates seamlessly with the other to provide uninterrupted workflow automation.

:Arkitex Feature	:Arkitex Module
Track both text and barcodes of multiple production events with automatic priority control based on hot times	:Arkitex Director
Extend automation to the press and reduce paper and ink waste.	:AutoPlan/:AutoInk
Save time by automating the assembly of 4- and 8-up plates.	:Arkitex Imposer
Simplify planning of complex imposed editions with automatic imposition adjustments for half-web positions.	
Enhance TIFF workflow performance with Image Agents.	:Arkitex Image Agent
Highlight production issues with standard newspaper reports	:Arkitex Report



Argentina,
(Paraguay and Uruguay),
Tel.: 5411-4958-5767
Australia, Tel.: 03 9279 6300
Austria, Tel.: 43-1-89112-3290
Belgium, Tel.: 32-3-450-98-66
Belgium, Direct Export
Tel.: 32-3-444-7120
Brazil, Tel.: 55-11-5188-6444

Canada, Tel.: 416-241-1110 Ext: 4053 or
877-753-2432 toll free
Caribbean and Central America,
Tel.: +305 213 5311
Chile, (Bolivia, Ecuador, Peru)
Tel.: 56 2 360 7600
China, Hong Kong Tel.: 852-2555-9421
Colombia, Tel.: 571 425 2790
Czech Republic, Tel.: 420-2-6610-1623

Denmark, Tel.: 45-4326-6766
Finland, Tel.: +358 9 8878 319
France, Tel.: 33-1 47 32-6905
Germany, Tel.: 49-221-5717-0
Greece, Tel.: 30-1-570-6500
Hungary, Tel.: 361-212-1540
Ireland, Tel.: 353-1-450-6733
Italy, Tel.: 39-02-3074-220
Japan, Tel.: 81-3-5704-3140

Korea, Tel.: 82-2-2262-4200
Luxembourg, Tel.: 352-44-20-441
Malaysia, Tel.: 603 7957 4200
Mexico, Tel.: +52 55 52 767600
Netherlands, Tel.: 31-70-413-1211
New Zealand, Tel.: 64-9-443-5500
Norway, Tel.: 47-67 06 88 00
Poland, Tel.: 48-22-572-3940
Portugal, Tel.: 351-21 414-6700

Singapore, Tel.: +65 6214 0110
South Africa, Tel.: 27-11-921-5911
Spain, Tel.: 34-93-476-7600
Sweden, Tel.: 46-8-793-0100
Switzerland, Tel.: 41-1-823-7111
Taiwan, Tel.: 886-2-2516-8899
UK, Tel.: 44 20 8231 4929
USA, Tel.: 800-227-2780
Venezuela, Tel.: 58 212 263 6344

© Copyright 2003 by Agfa-Gevaert N.V. All rights reserved. Printed in Belgium.
AGFA and the Agfa rhombus are registered trademarks of Agfa-Gevaert AG.
:Arkitex AutoInk, :Arkitex AutoPlan, :Arkitex Director, :Arkitex Image Agent, :Arkitex Imposer,
:Arkitex Pair and :Arkitex Report are trademarks of Agfa-Gevaert N.V., Belgium.
All other trademarks are the property of their respective holders.
All product specifications are subject to change without notice.
Appearance of equipment ordered may differ from that equipment shown in photographs.

www.agfa.com

NF6C2 GB 00200310

AGFA 

| see more | do more